

SERVICE INSTRUCTIONS FOR POLYPROPYLENE PUMP #360

Piece Count:

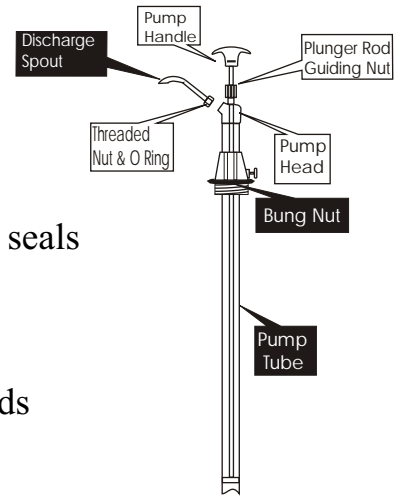
1. Pump Tube Assembly
2. Bung Nut with 2" threads
3. Discharge Spout assembly (curved spout with nut & O Ring)

Features:

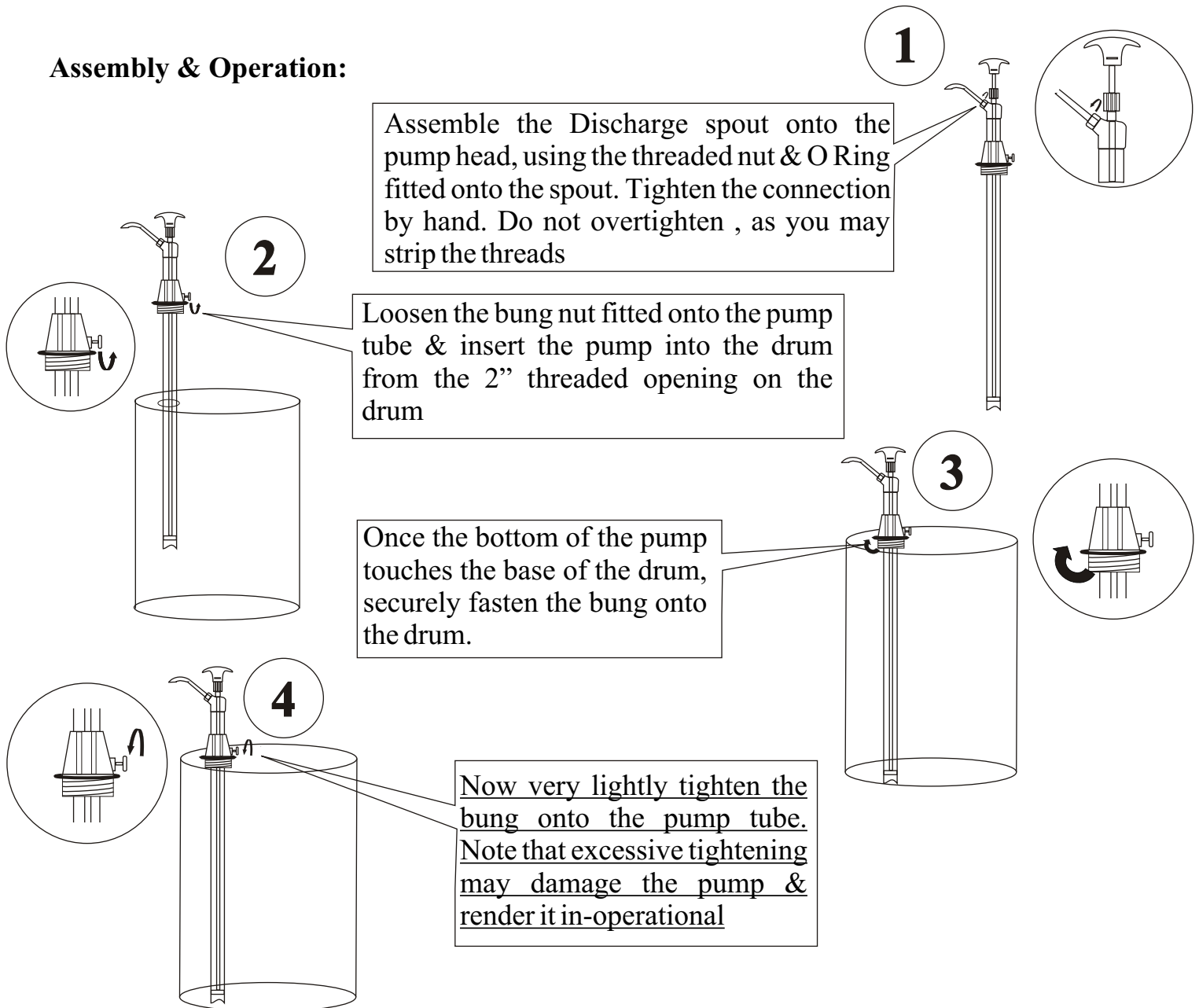
- Polypropylene pump construction with steel plunger rod & viton seals
- Low fatigue operation
- Fits 15 to 55 gallon (50-205 liter) drums
- Dispenses 400 ml (14 oz.) Per stroke
- Designed for use with Antifreeze, Detergents & Windshield Fluids

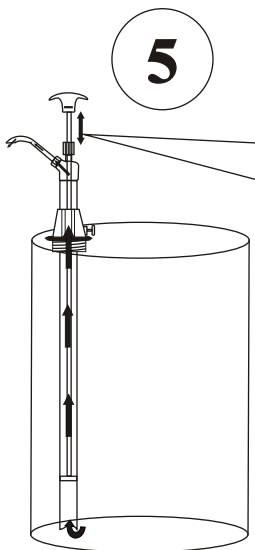
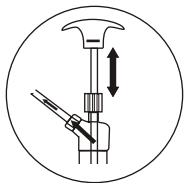
Wetted components:

Polypropylene, Steel & Viton



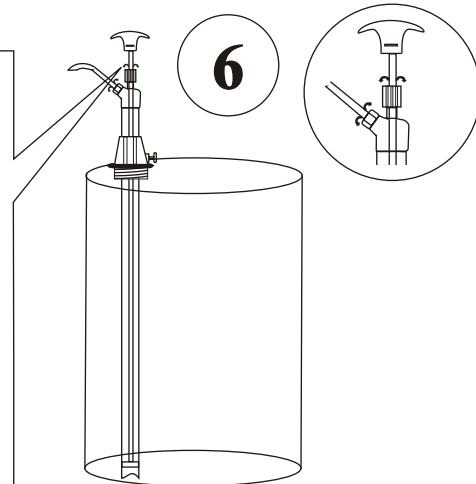
Assembly & Operation:





Take an empty container & place it below the discharge spout. Start operating the pump handle by moving it up by about 12" & then down. Within a maximum of 4 strokes, pump will be primed & will start dispensing media. Amount of fluid discharge per stroke can be controlled by the lift of the pump handle. The higher the lift, the greater the discharge per stroke. Never take the pump handle to its extreme top position, but operate within a convenient lift height.

There maybe some leakage of media from the plunger rod guiding nut. The nut is factory tightened for test media. Depending upon the viscosity of media used, the nut should be loosened or tightened to control any flow of media from this connection. Also, you may need to slightly adjust the Threaded Nut & O Ring, if there is any leakage from this connection.



Due to the nature of aggressive media with which this pump maybe used, it is designed to drain out all the fluid from the pump body, when not in use. Pump needs to be re-primed each time it is used & this generally takes only 2-3 strokes

Recommended for use with:

- Antifreeze
- Detergent
- Windshield Fluid
- Mild Acids
- Glycerine
- Petroleum based media

Do Not Use with:

Strong Acids, Lacquer Thinner, Acetone, Gasoline etc.